

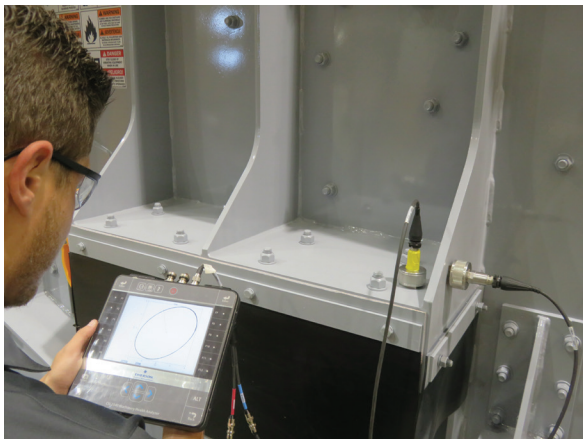
EMF SERIES

Two-Mass Electromechanical Vibrating Feeders

Deister backs its EMF Series with 24/7 parts and service support; stocked American-made parts; and a global network of dealers. Deister also offers expedited deliveries on stock models.



Deister's skilled service technicians are available for installation, onsite troubleshooting and training.



State-of-the art vibration analysis tools are used in a rigorous testing process prior to shipping, ensuring that each piece of equipment performs to its optimum potential.



Suspension-mounted in the surge tunnel, the EMF feeder allows the operation to pull more material from the bottom of the surge pile, delivering a more consistent material feed and a more uniform product flow through to the plant – resulting in a higher-quality finished product.

As a family-owned company celebrating more than a century of manufacturing excellence, Deister remains a customer-focused leader in the aggregate and mining industries.

DEISTER MACHINE COMPANY, INC.
P.O. Box 1 • Fort Wayne, IN 46801
260-426-7495 • Fax: 260-422-1523
info@deistermachine.com
deistermachine.com

EMF SERIES

Two-Mass Electromechanical Vibrating Feeders

Ensure high-capacity feed rates, lower costs per ton, and greater productivity in a wide range of rugged aggregate and mining applications



Robust machine weight

Long bearing life

No bearings to grease

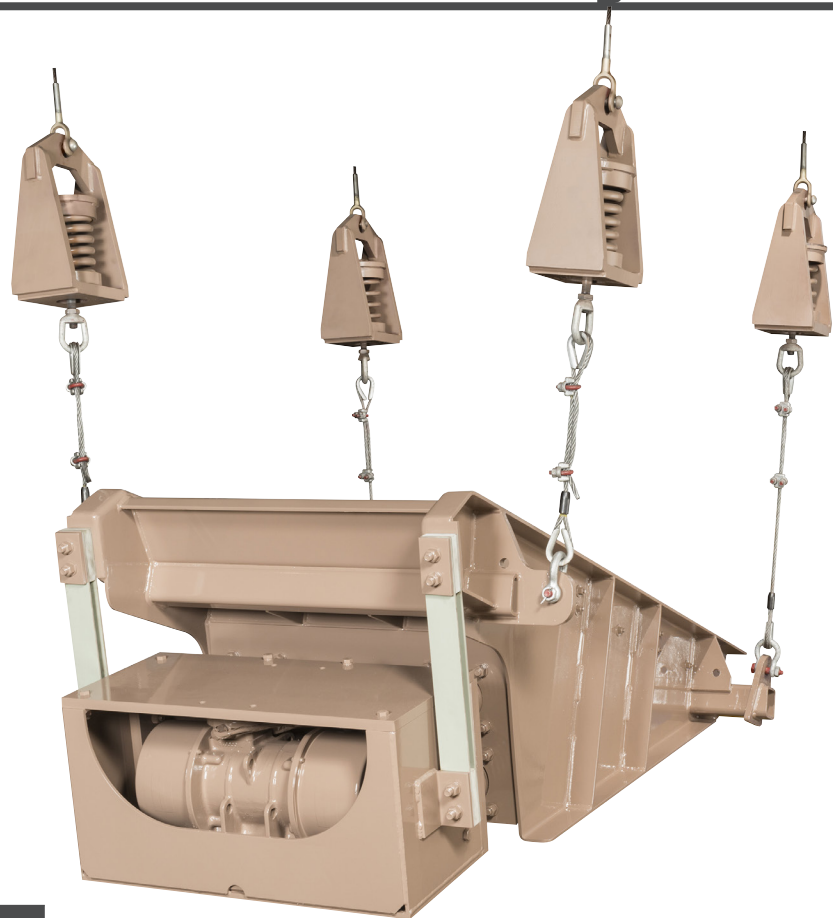
No belts to replace

Energy efficient



EMF Two-Mass Electromechanical Vibrating Feeder

- Gain greater control over high-capacity feed rates while lowering costs per ton.
- A simplified drive is designed with an easy-access exciter frame, which houses the single vibrator motor – resulting in longer bearing life, and eliminating the need to replace belts.
- Incorporates a high-profile in-feed lip; and a heavy-duty formed deck with replaceable liners.
- Energy-efficient pre-compressed steel transmission springs are not susceptible to temperature or shelf life.
- Features heavy-duty spring isolation assemblies for suspension or support mounting.



EMF Feeder with Belt Centering Device.

Estimated capacities are based on dry material with an angle of repose of 37° and a deck downslope of 10°

Model	Deck Size	Est. Capacity	Est. Machine Weight
EMF-306*	30" x 72"	500	3000#
EMF-307*	30" x 84"	550	3200#
EMF-366*	36" x 72"	600	3300#
EMF-367*	36" x 84"	675	3500#
EMF-368	36" x 96"	800	4000#
EMF-426*	42" x 72"	700	3800#
EMF-427*	42" x 84"	800	4000#
EMF-428*	42" x 96"	925	4500#
EMF-486	48" x 72"	800	4300#
EMF-487*	48" x 84"	950	4400#
EMF-488*	48" x 96"	1050	4800#
EMF-548	54" x 96"	1250	6100#
EMF-608*	60" x 96"	1350	6200#

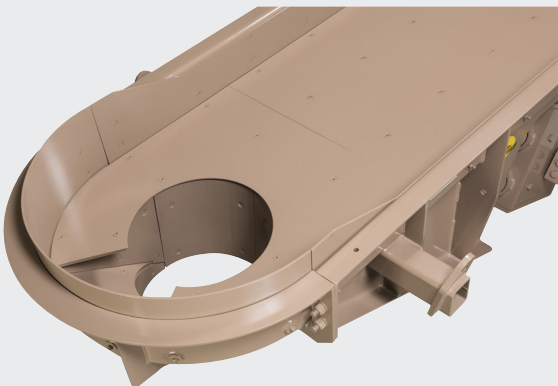
*Stock models – availability 1 to 2 weeks

EMCO 360 Crusher Optimizer Feeder

- Optimize cone crusher performance by distributing a homogeneous feed.
- A 360-degree discharge opening keeps cones choke-fed for optimum efficiency, product consistency, higher production rates, and greater manganese wear life.
- The EMCO 360 is designed to eliminate the need for two pieces of equipment – the traditional flat pan feeder and the rotating feed distributor – while incorporating the action of the rotating feed distributor to evenly distribute material into the cone.



A more robust machine weight, and a heavy-duty formed deck with replaceable liners



A 360-degree opening evenly discharges material to the cone to ensure greater rock-on-rock crushing, and extended manganese wear life

Estimated capacities are based on dry material with 3/8" thick liners; Angle of repose of 37° and a deck downslope of 5°

Model	Deck Size	Est. Capacity	Est. Machine Weight
EMCO-368	36" x 96"	400	5200#
EMCO-427	42" x 84"	400	5300#
EMCO-487.5	48" x 90"	520	6200#
EMCO-488	48" x 96"	600	6300#