



Inclined Scalping and Sizing
VIBRATING SCREENS
for Drum Mix Asphalt Plants

USM Vibrating Screens for

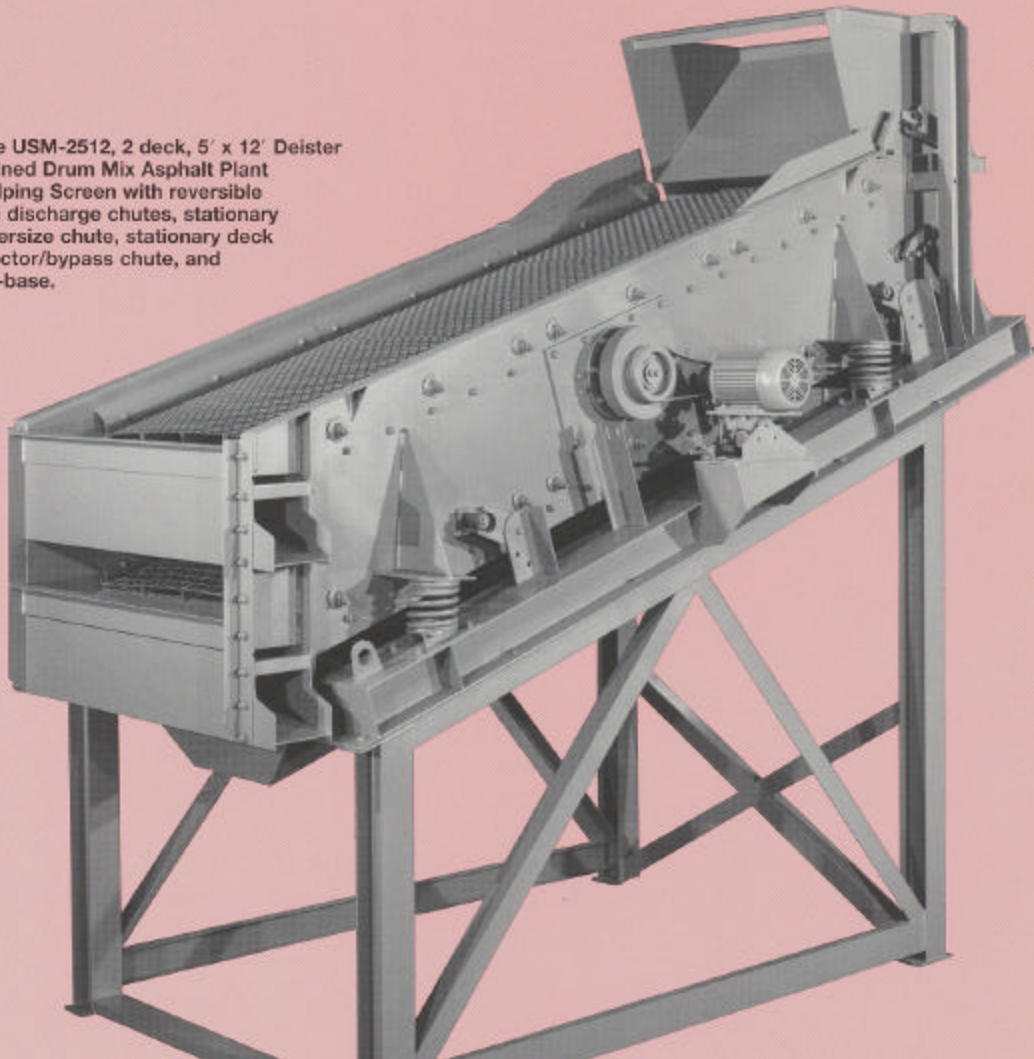
USM type vibrating screens are specially designed for high capacity scalping or sizing in portable and stationary drum mix asphalt plants. These rugged low maintenance screens, combined with our years of experience designing special models tailored to individual applications, make Deister the easy choice.

Check with Deister owners and operators anywhere. You'll find Deister Screens delivering

dependable production, even under the most adverse operating conditions and handling all types of materials.

Deister Screens are backed by a follow-through parts and service policy without equal, for Deister top management is personally interested in the continued profitable operation of every Deister Screen.

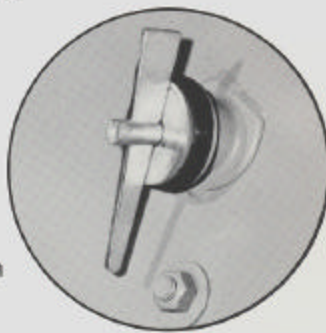
Type USM-2512, 2 deck, 5' x 12' Deister Inclined Drum Mix Asphalt Plant Scalping Screen with reversible side discharge chutes, stationary undersize chute, stationary deck selector/bypass chute, and sub-base.



PORTABLE and STATIONARY ASPHALT PLANTS

Deister USM Type Vibrating Screens have many outstanding features which are standard equipment on each unit.

- Oil lubricated vibrating mechanism
- Steel coil spring type suspension
- Bolt-in screen support decks
- Interchangeable screen sections
- Heavy duty screen cloth tensioning device
- Bolted construction for easy replacement of wear parts
- Adjustable throw
- Tension plates of exclusive design
- Discharge lips
- Pick-up brackets
- Feed box with $\frac{3}{8}$ " A-R wearplate
- Reinforcing plates for vibrating mechanism on side sheets
- Reversible side discharge chutes
- Stationary oversize discharge chutes
- Stationary or vibrating undersize chute
- Stationary deck selector/bypass chute
- Sub-base
- Rubber shear spring type suspension system (6' and 8' long only)
- End tensioned screen deck

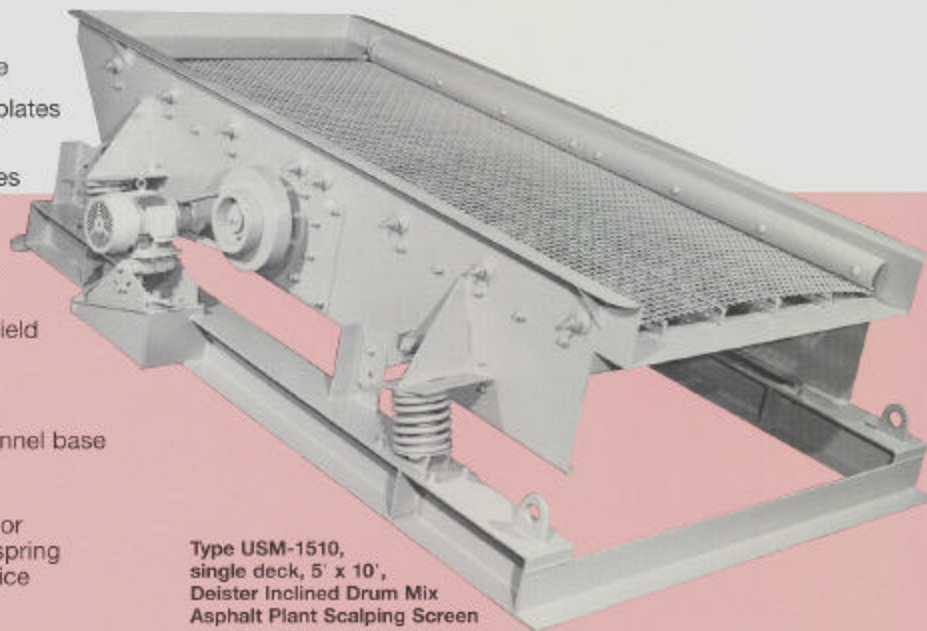


TENSION WEDGE

Deister Tension Wedge and "Rubber-Spring" screen cloth tensioning device, with the advantage of quick tightening and easy release, while at the same time providing constant tension through the action of the molded rubber spring.

Optional Equipment includes

- Motor mount, V-belt drive, guard, and pivot motor base
- Wear plates above tension plates
- Manganese and A-R steel wear plates for tension plates
- Rubber covered tension plates
- Wear liner on discharge lip
- Rubber mechanism tube shield
- Polyurethane coating on exposed surfaces
- Wide flange H-beam or channel base
- Ball tray decks
- "Automatic" spring-tension or tension wedge and rubber spring screen cloth tensioning device



Type USM-1510,
single deck, 5' x 10',
Deister Inclined Drum Mix
Asphalt Plant Scalping Screen

DEISTER LONG LIFE VIBRATING MECHANISM

The entire vibrating mechanism is a precision constructed, jig assembled unit. It incorporates a two-bearing vibrating mechanism and runs in a bath of oil with internal and external labyrinth seals to prevent loss of oil and entrance of dirt.

Deister's exclusive slingermist lubricating system makes it possible for Deister screens to operate at higher speeds and at lower operating temperatures. This system is the ultimate in oil lubrication of anti-friction bearings and assures safe operating temperatures under extremely hot climatic conditions where the mechanism, in effect, acts as its own oil cooling system.

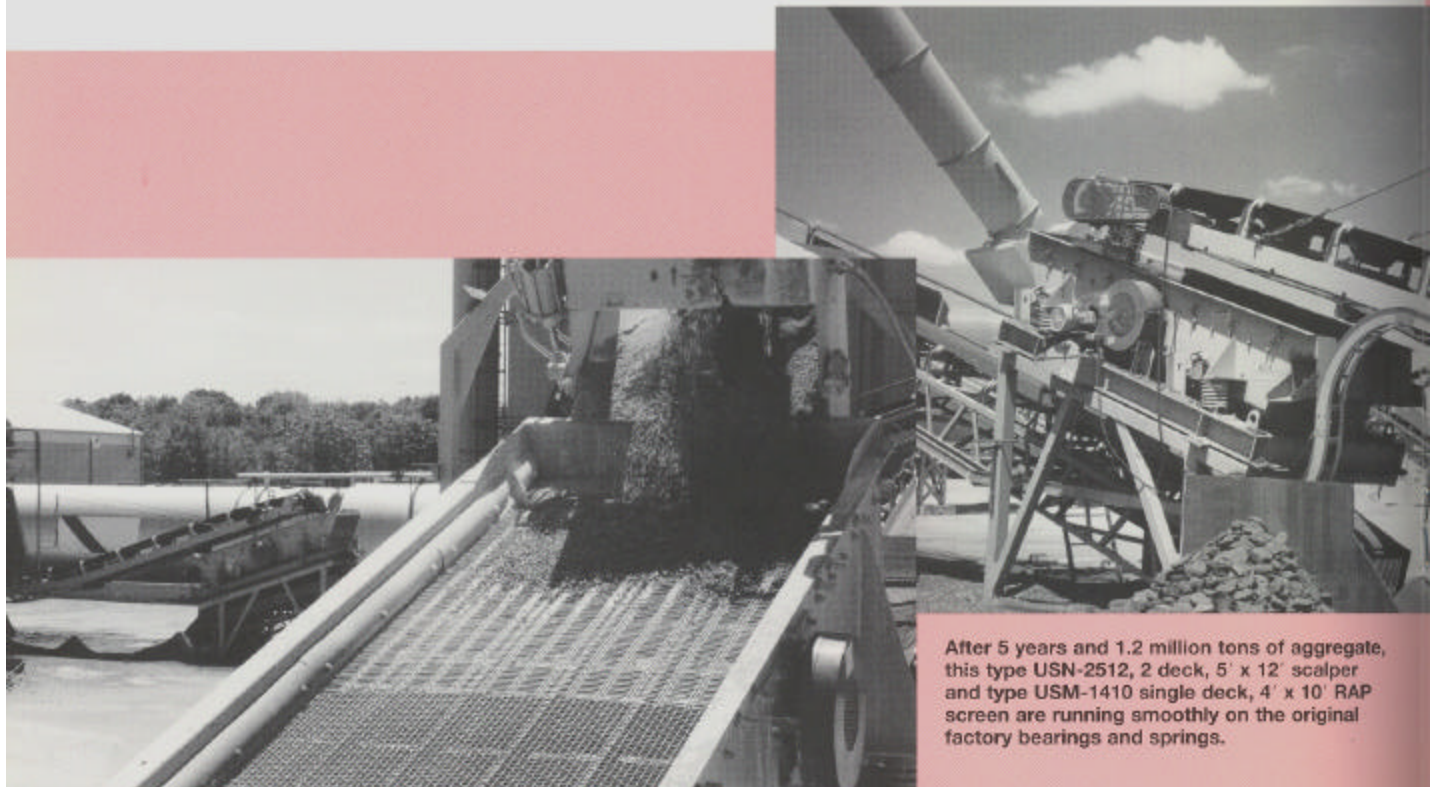
The lower portion of the shaft casing tube serves as the oil reservoir across its entire length. The oil is agitated by slingers on the eccentric shaft and constantly envelops the spherical roller bearings and all moving parts. It should never be necessary to add oil to the mechanism, with oil changes recommended every 500 hours of operation. Replaceable bronze sleeves between the inner race of the

bearing and the shaft prevent wear on the shaft. Should wear on the sleeve occur, even after years of rugged service, the original close "factory-tolerances" can be easily restored by the simple replacement of the sleeve.

Since first building vibrating screens in 1926, the Deister Machine Company has always designed its vibrating mechanisms with the bearing a slip fit on the shaft or replaceable sleeve, and a press fit in the housing. (Sleeves were not used prior to 1950.) The replaceable sleeve is a slip fit on the shaft. Slip fits assure even wear on bearings and sleeves—providing longer life—easier replacement.

Stroke (throw) adjustments can be made in the field simply by adding or removing counterweight plates to/from the unbalanced flywheels.

The steel tube shaft casing can be protected by an abrasion-resistant rubber cemented to the tube.

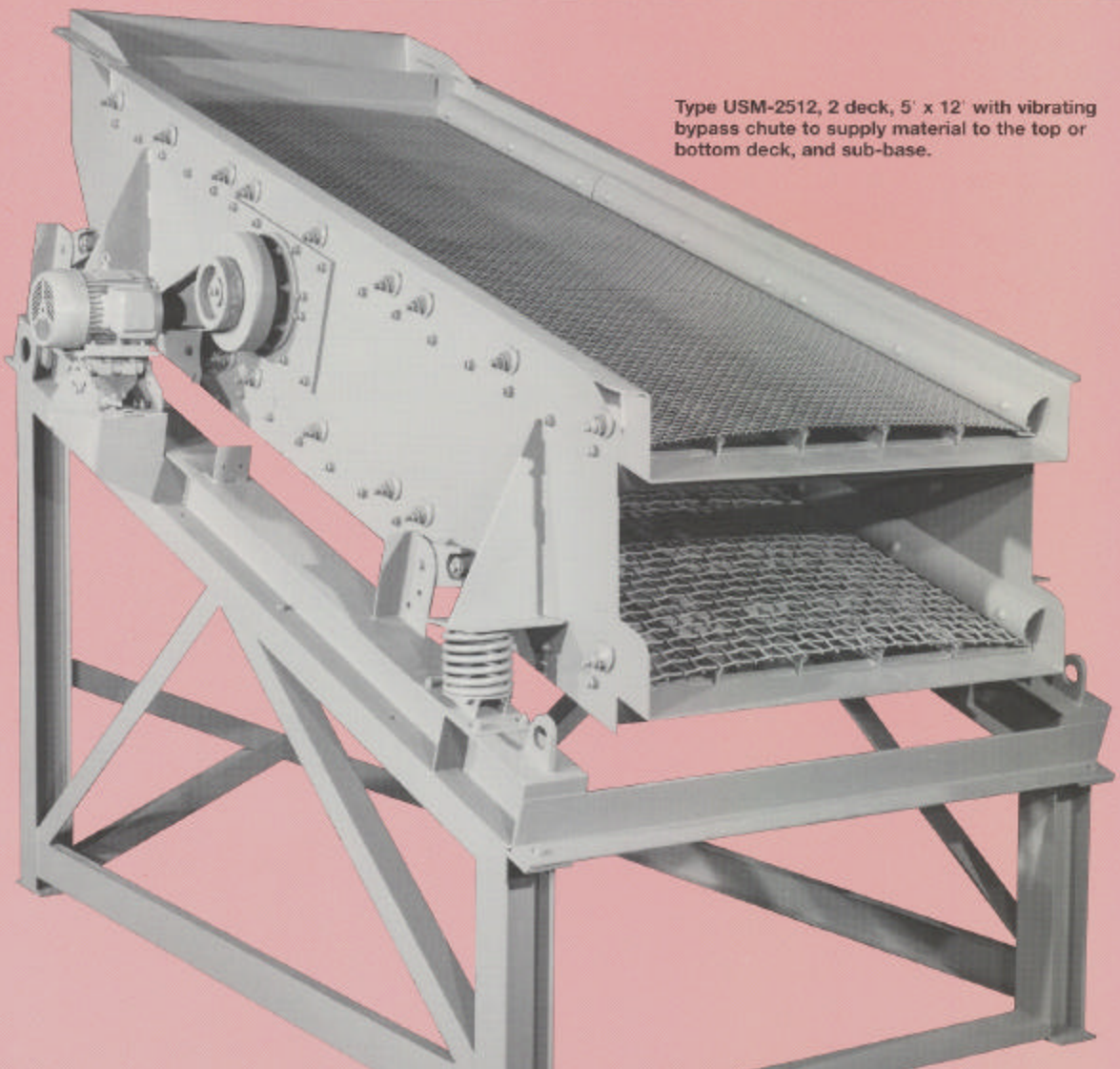


After 5 years and 1.2 million tons of aggregate, this type USN-2512, 2 deck, 5' x 12' scalper and type USM-1410 single deck, 4' x 10' RAP screen are running smoothly on the original factory bearings and springs.

Type USM-2512, 2 deck, 5' x 12' with reversible side discharge chutes, stationary undersize chute, and stationary deck selector/bypass chute.



Type USM-2512, 2 deck, 5' x 12' with vibrating bypass chute to supply material to the top or bottom deck, and sub-base.



Type ETF Vibrating Screens for Scalping

Are you having trouble fitting a large all-purpose scalping screen with conveyors into your drum mix plant design? Perhaps you need to look at the Deister alternative, the Type ETF Vibrating Screen. This small low maintenance unit is placed directly beneath each storage bin discharge and screens material before it is mixed, or can be used to scalp RAP.

Unitized construction and a grease lubricated vibrating mechanism combine for an economi-

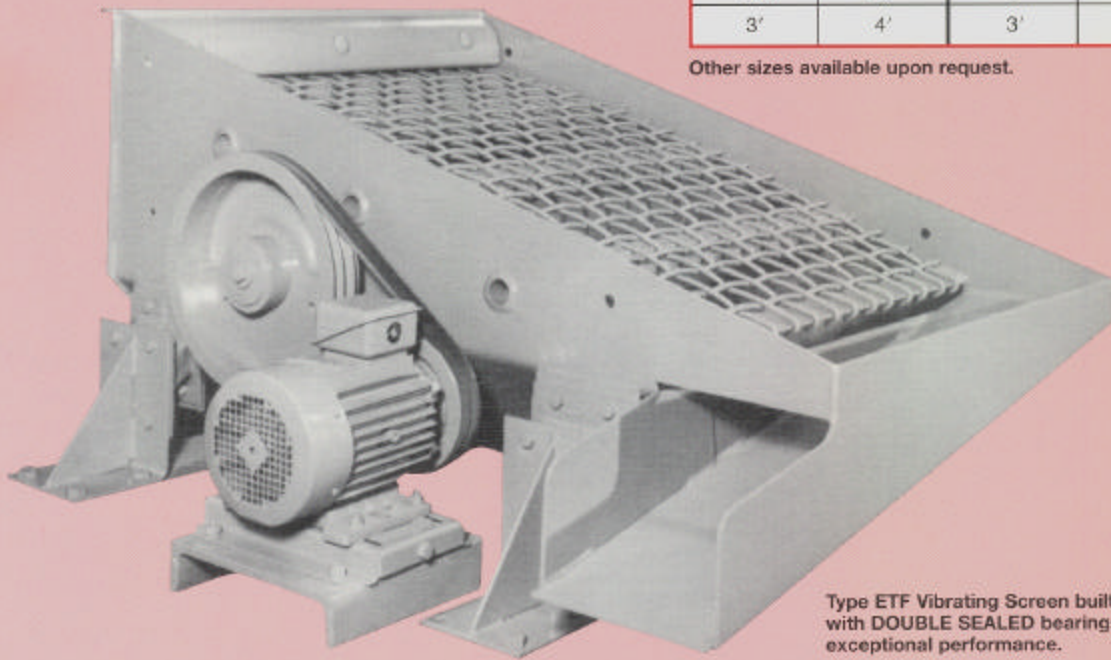
cal, rugged machine that requires only weekly greasing. Over 600 units have been built with our exclusive "double sealed" bearing.

A single machine can be very versatile. The hand of drive on any unit can be changed from side to side in a matter of minutes. An optional reversible side discharge chute can be field-changed with wrenches to discharge off the opposite side.

The single deck ETF is available in the following standard sizes:

Width	Length	Width	Length
2'	4'	3'	5'
2 1/2'	5'	3'	6'
3'	4'	3'	8'

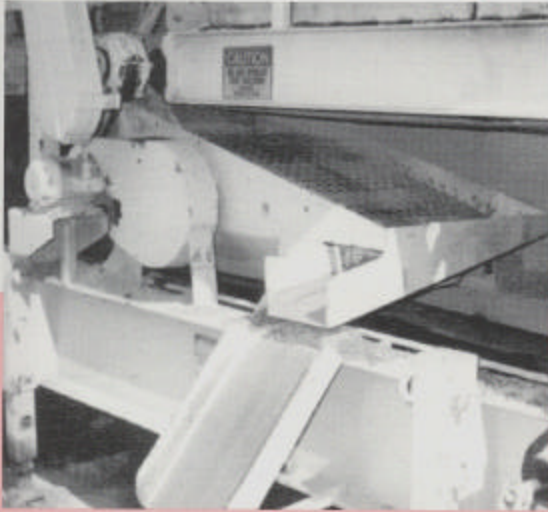
Other sizes available upon request.



Type ETF Vibrating Screen built with DOUBLE SEALED bearings for exceptional performance.

Type ETF Vibrating Screens have many outstanding features which are standard equipment on each unit.

- Grease lubricated vibrating mechanism
- Adjustable stroke and speed
- Double sealed bearings
- End tension screen cloth
- Cross tube buckler-up rubber for long cloth life
- Over the end or side discharge chutes



- Tapered side sheets for easy conveyor loading with provision for rubber skirting to conveyor surface
- Maintenance-free rubber shear spring type suspension system
- "Automatic" spring tension screen cloth tensioning device

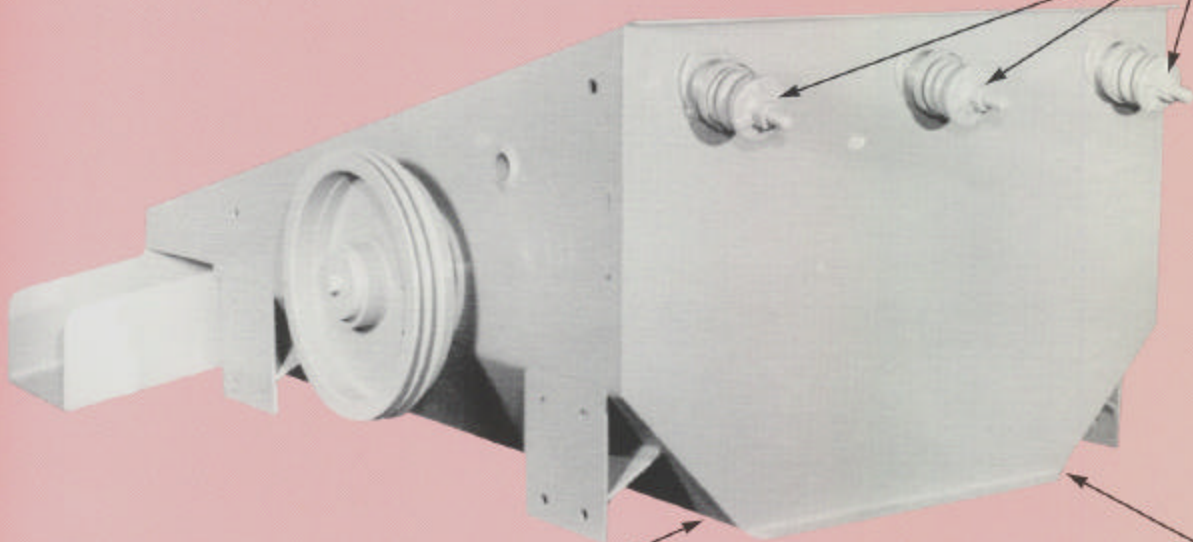
Optional equipment includes:

- Reversible side discharge chutes
- Ball trays
- Steel coil spring suspension system
- Beltguard



Type ETF-134, single deck, 3' x 4' with side discharge chute under each of the four individual storage bins.

End tensioned screen cloth is held in place by "Automatic" spring tension assemblies.

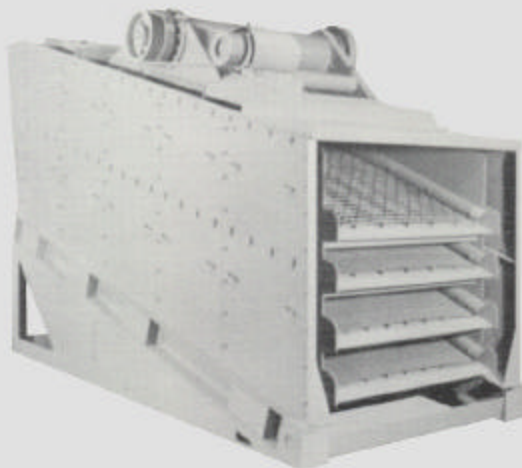


Standard tapered side sheets can feed onto 24" or larger belts.



Type BF-4516-DDS
4 1/2 deck, 5' x 16', Deister
Totally Enclosed Horizontal Screen
with roll-a-way chute

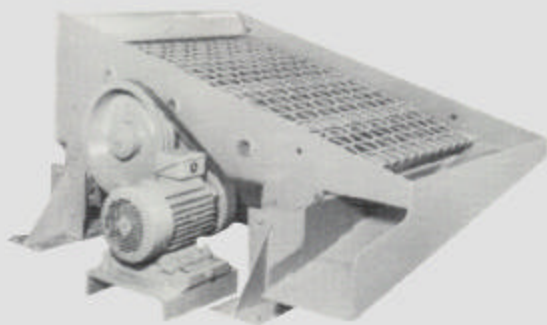
Type USM-2512, 2 deck,
5' x 12', Deister inclined
Screen with deck selector,
bypass chute, and
sub-structure



Type UHS-3616D
3 1/2 deck, 6' x 16', Deister
Totally Enclosed Inclined Screen

Specify
DEISTER
vibrating screens
for your
asphalt plant,
either hot mix
or drum mix

**WHETHER YOU'RE BUYING OR BUILDING
A NEW PLANT OR MODERNIZING AN
EXISTING ONE, GIVE YOUR ASPHALT
SCREENING PROBLEMS TO
DEISTER. THE LEADER
SINCE 1933.**



Type ETF-134, single
deck, 3' x 4', Deister
Scalping Screen

5 1/4 deck, 6' x 18',
Asphalt Plant
Screen with
chutes and
catwalk



DEISTER MACHINE COMPANY, INC.
P.O. Box 5188 • Fort Wayne, IN 46895
(219) 426-7495 • FAX (219) 422-1523
info@deistermachine.com



INC. 1912